

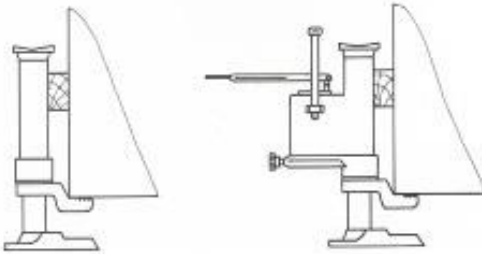






- 1 – Read these instructions carefully before use.
- 2 – Keep this manual.
- 3 – The use of this appliance must be prohibited to any person not aware of these safety instructions which shall be strictly adhered to.
- 4 - The load to be raised must be laterally guided so that the leg of the jack, when used, cannot revolve around the axis of the jack during lifting.
- 5 -The jack must be used on a flat surface, capable of withstanding the load. The leg must adhere to the ground over the whole surface.
- 6 -  The use of the jack on its head calls for the **centre of the head to be in main centre line of the jack.**
- 7 -  The use of the jack requires **at least 4 teeth** of the leg to be in contact with the load.
- 8 -To prevent the jack from tilting during lifting, a wooden wedge is inserted between the body of the jack and the load, as close to the head as possible, as per the enclosed diagram:



- 9-If the loading height is insufficient to adhere to the previous instruction, the leg must be used over its entire length.
  - 10-Do not overload the jack.
  - 11-  **Before lifting, make sure there is no one the load or within its immediate vicinity.**
  - 12-  **It is strictly prohibited to go under the load when it is only held by the jack**, particularly during raising and lowering operations.
  - 13-  It is prohibited to insert shims between the head (or leg) of the jack and the lifting point of the load.
  - 14- Check the correct condition of the jack before each use.
- Any safety device.
- 15- the oil change, provided for in the maintenance manual, shall be carried out at least every 2 years.
  - 16-The force to be applied at the end of the lever to lift the maximum load is:  
**CRIC HYDROGRIF 5T : 45 kg CRIC HYDROGRIF 10T : 50 kg CRIC HYDROGRIF 20T : 45 kg**
  - 17- For jacks with a separate pump, the flexible hose connecting the pump to the jack must be arranged so that it is not subject to damage during use : cutting, crushing.....



## PRECAUTIONS FOR USE OF HYDROGRIF-MCGH FLOCK

 In the case of the use of several jacks for the lifting of a load, it is necessary to foresee the risk of carrying overloads. The capacity of the jacks must be much greater than the load.


In case where the jack does not come down completely, check if the column has not been deformed during a previous use. If so, the jack must be returned for review. **Do not use the jack.**

In case where the lever has a pumping hard point, check if it is not deformed. If so, the jack must be returned for review. Stop the use to avoid damaging the pump. **Do not use the jack.**



## GUARANTEE CLAUSE FOR HYDROGRIF - MCGH

The manufacturer MC GENERALE HYDRAULIQUE, contractually guarantees each jack against manufacturing defects or material, in normal conditions of use during a period of 12 months from the date of commissioning. The warranty is limited to labor and defective parts. Transport is the responsibility of the applicant, and return transport is the responsibility of MC GENERALE HYDRAULIQUE.

 The following causes will be excluded from the warranty:

- A jack that has been used in overload, or misused. (extension on the lever, bad wedging ...)
  - A jack that has not been maintained, causing premature wear.
  - A modified, or disassembled jack.
- A jack having suffered external damage (water damage, storage in the rain, fire, shock, crushing, deformation, or misuse ...)



## INSTRUCTIONS FOR USE AND MAINTENANCE FOR HYDROGRIF - MCGH

**CONSTRUCTION:** Hydrogrif paw jacks have been designed to meet the criteria of the material handler and are built for permanent use in the most demanding conditions.

**Robustness:** one-piece welded steel body, fatigue parts: column, lifting lug and special steel sole, treated, high resistance. Finishing paint, two layers polyurethane.

**Safety:** Pressure limiter prevents overloading.

Control of the descent speed of the load, iscontrolled effortlessly and without risk.

Possibility of instant stop and most importantly, hydraulic control eliminating any risk of return of the lever.

### TRANSPORT:

Easy transport by a retractable handle, because of the reduced weight of the Hydrogrif jack, its compact shape, its good balance and its tightness in all positions. Avoid the transport of the jack by its maneuver lever.

### OPERATION:

**Lifting:** Turn all the way, to the right, by hand, the control handle rep.28. Operate up and down the operating lever.

**Descent:** Slowly loosen the control handle by turning to the left: The descent control is total and stopping is instantaneous.

MC GENERALE HYDRAULIQUE - BP7 - 813 Route de Saint Etienne - 42210 MONTROND LES BAINS

TEL 04 77 54 42 66 FAX 04 77 54 49 75 [contact@mcgh.fr](mailto:contact@mcgh.fr)